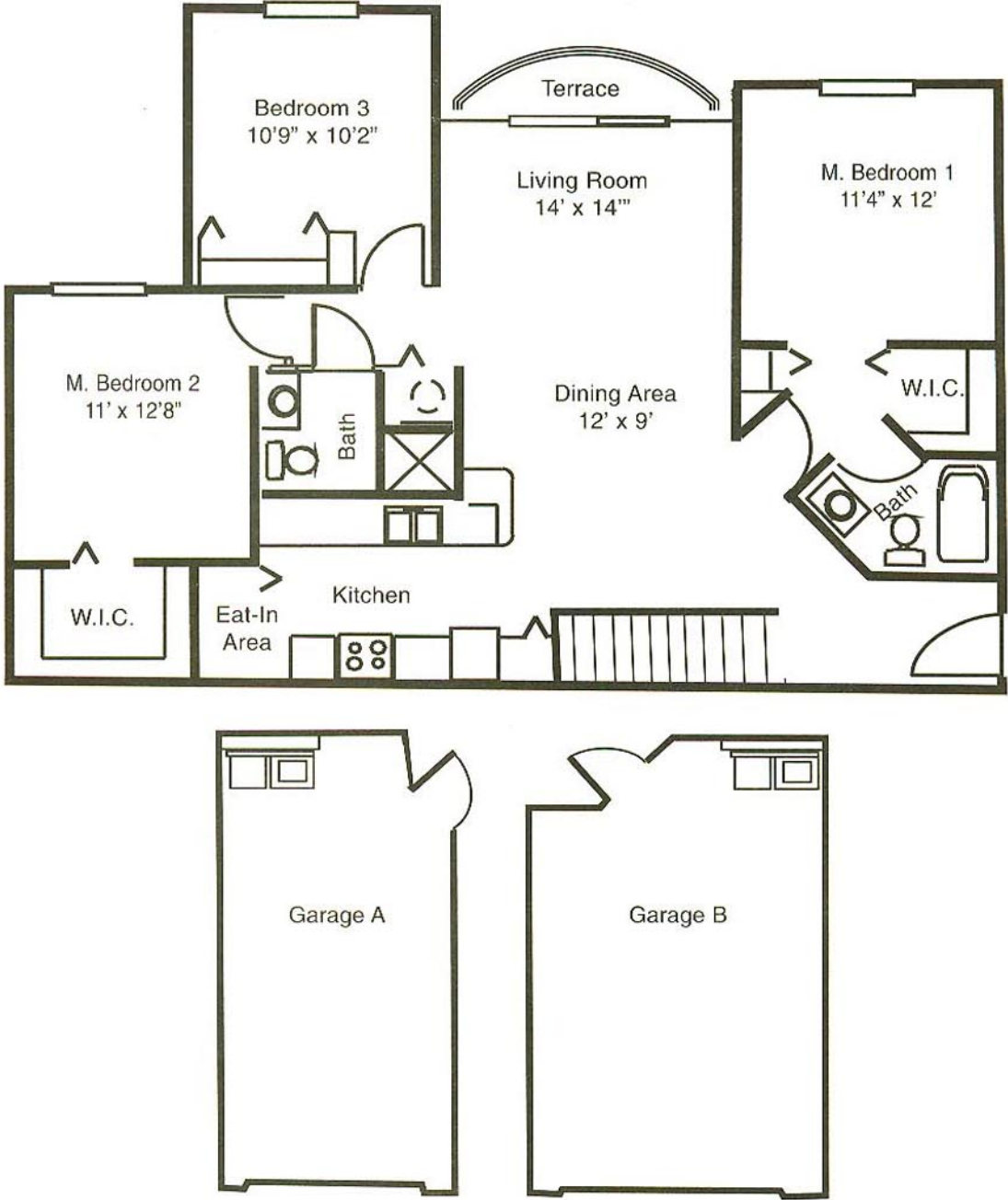


# Southwind



### Three Bedroom /Two Bath/Garage

Air Conditioned Space	1235 sq. ft.
Terrace	27 sq. ft.
<hr/>	<hr/>
Total	1262 sq. ft.
Garage A	299 sq. ft.
Garage B	329 sq. ft.

4145 N. Haverhill Road, West Palm Beach, FL 33417 • (561) 687-7944 • Fax (561) 687-1135



Your selected floor plan may vary from this illustration. All dimensions are approximate.



# Southwind Features

## *Amenities*

### *Spacious Kitchen*

- European-style cabinetry
- Whirlpool appliances
  - Frost-free refrigerator with ice-maker
  - Dishwasher
  - Garbage disposal
  - Range with self-cleaning oven
- Built-in telephone shelf
- Ceramic tile
- Eat-in area with breakfast bar

### *Elegant Bathrooms*

- Ceramic tile
- Large vanity with storage drawer
- Master bath tub/shower combination
- Guest bath shower only

### *Other Luxurious Features*

- Full size washer and dryer
- Private terrace
- Large walk-in closets
- Ceramic tile in foyer
- Vertical blinds on all windows and sliding door
- Plush wall-to-wall carpeting
- Smoke detector and fire sprinkler system
- Pre-wired for cable TV and high speed internet access
- Intrusion alarm with monitoring option
- Ceiling paddle fan
- Track lighting in dining area
- Attached one car garage with automatic opener and large storage capacity
- Floorplan available on second floor only