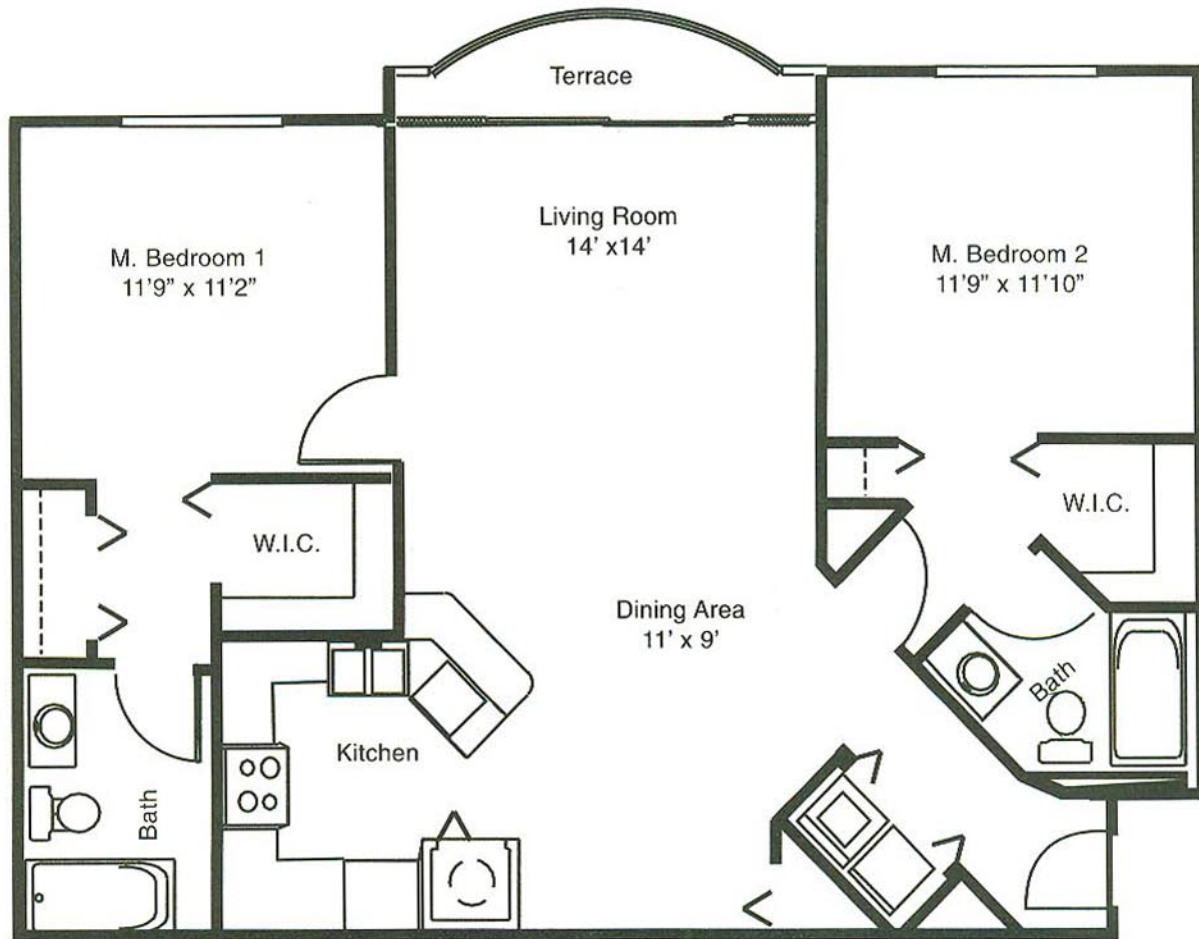


Islamorada



Two Bedroom /Two Bath

Air Conditioned Space	1071 sq. ft.
Terrace	32 sq. ft.
<hr/>	<hr/>
Total	1103 sq. ft.



4145 N. Haverhill Road, West Palm Beach, FL 33417 • (561) 687-7944 • Fax (561) 687-1135

Your selected floor plan may vary from this illustration. All dimensions are approximate.



Islamorada Features

Amenities

Spacious Kitchen

- European-style cabinetry
- Whirlpool appliances
 - Frost-free refrigerator with ice-maker
 - Dishwasher
 - Garbage disposal
 - Range with self-cleaning oven
- Built-in telephone shelf
- Ceramic tile
- Open breakfast bar

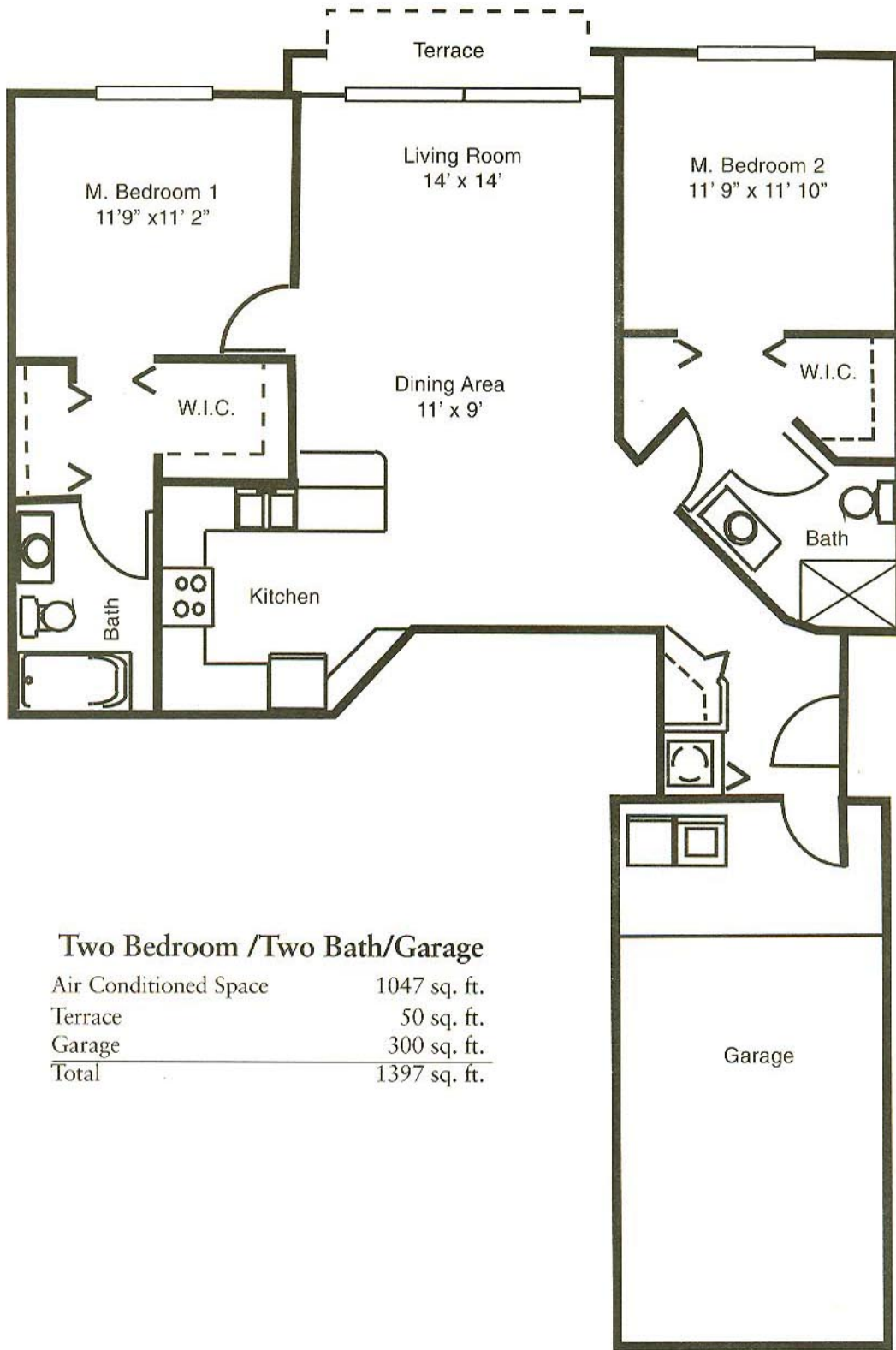
Elegant Bathrooms

- Ceramic tile
- Large vanity with storage drawer
- Tub/shower combination in both baths

Other Luxurious Features

- Full size washer and dryer
- Ceramic tile in foyer
- Private terrace
- Large walk-in closets
- Vertical blinds on all windows and sliding door
- Plush wall-to-wall carpeting
- Smoke detector and fire sprinkler system
- Pre-wired for cable TV and high speed internet access
- Intrusion alarm with monitoring option
- Ceiling paddle fan
- Track lighting in dining area
- Detached garages available

Key Largo



Two Bedroom /Two Bath/Garage

Air Conditioned Space	1047 sq. ft.
Terrace	50 sq. ft.
Garage	300 sq. ft.
Total	1397 sq. ft.



4145 N. Haverhill Road, West Palm Beach, FL 33417 • (561) 687-7944 • Fax (561) 687-1135

Your selected floor plan may vary from this illustration. All dimensions are approximate.



Key Largo Features

Amenities

Spacious Kitchen

- European-style cabinetry
- Whirlpool appliances
 - Frost-free refrigerator with ice-maker
 - Dishwasher
 - Garbage disposal
 - Range with self-cleaning oven
 - Built-in telephone shelf
 - Ceramic tile
- Open breakfast bar

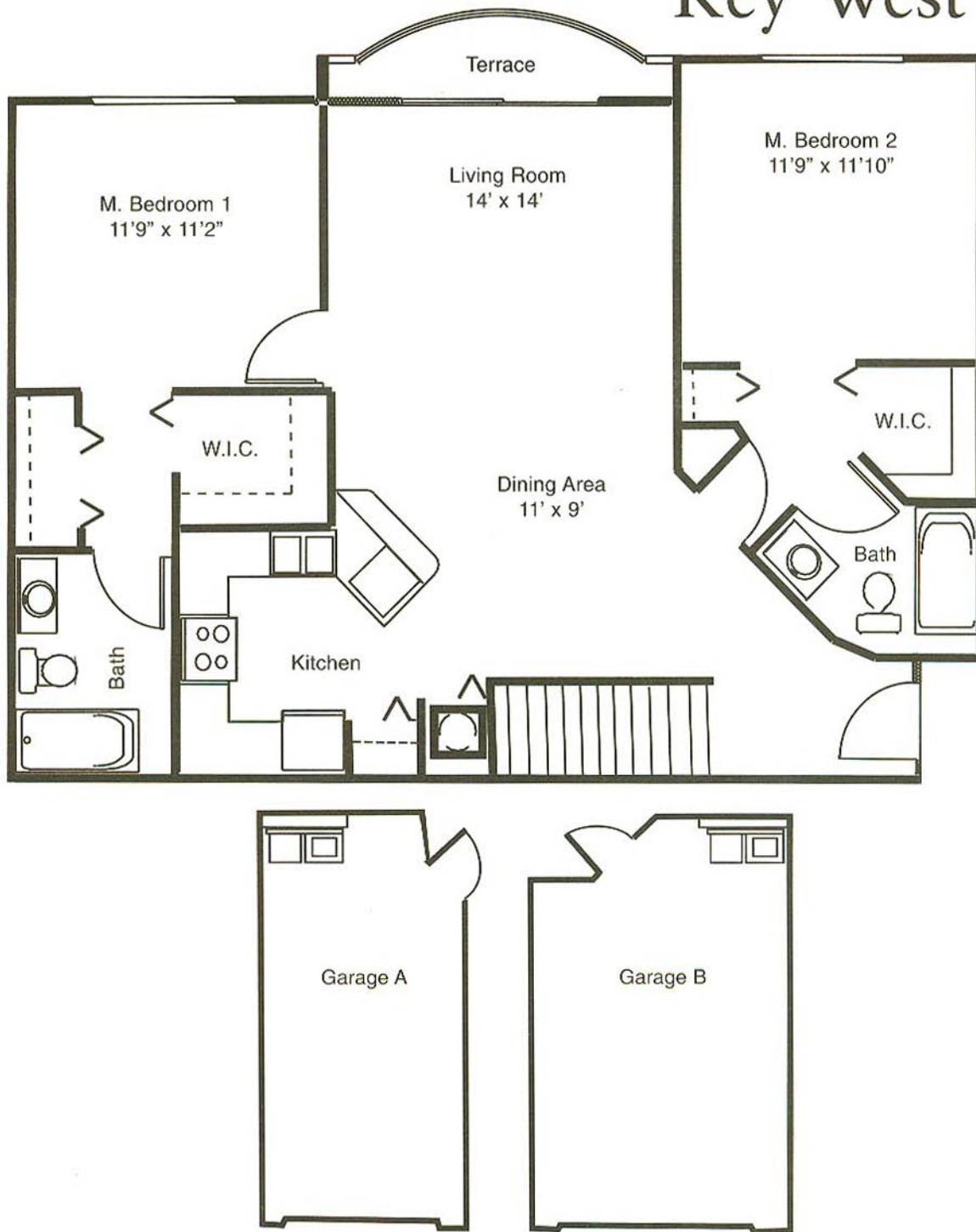
Elegant Bathrooms

- Ceramic tile
- Large vanity with storage drawer
- Master bath tub/shower combination
- Guest bath shower only

Other Luxurious Features

- Full size washer and dryer
- Ceramic tile in foyer
- Private terrace
- Large walk-in closets
- Vertical blinds on all windows and sliding door
- Plush wall-to-wall carpeting
- Smoke detector and fire sprinkler system
- Pre-wired for cable TV and high speed internet access
- Ceiling paddle fan
- Track lighting in dining area
- Intrusion alarm with monitoring option
- Attached one car garage with automatic opener and large storage capacity
- Floorplan available on first floor only

Key West



Two Bedroom /Two Bath/Garage

Air Conditioned Space	1071 sq. ft.
Terrace	32 sq. ft.
Total	1103 sq. ft.
Garage A	334 sq. ft.
Garage B	350 sq. ft.

4145 N. Haverhill Road, West Palm Beach, FL 33417 • (561) 687-7944 • Fax (561) 687-1135



Your selected floor plan may vary from this illustration. All dimensions are approximate.



Key West Features

Amenities

Spacious Kitchen

- European-style cabinetry
- Whirlpool appliances
 - Frost-free refrigerator with ice-maker
 - Dishwasher
 - Garbage disposal
 - Range with self-cleaning oven
- Built-in telephone shelf
- Ceramic tile
- Open breakfast bar

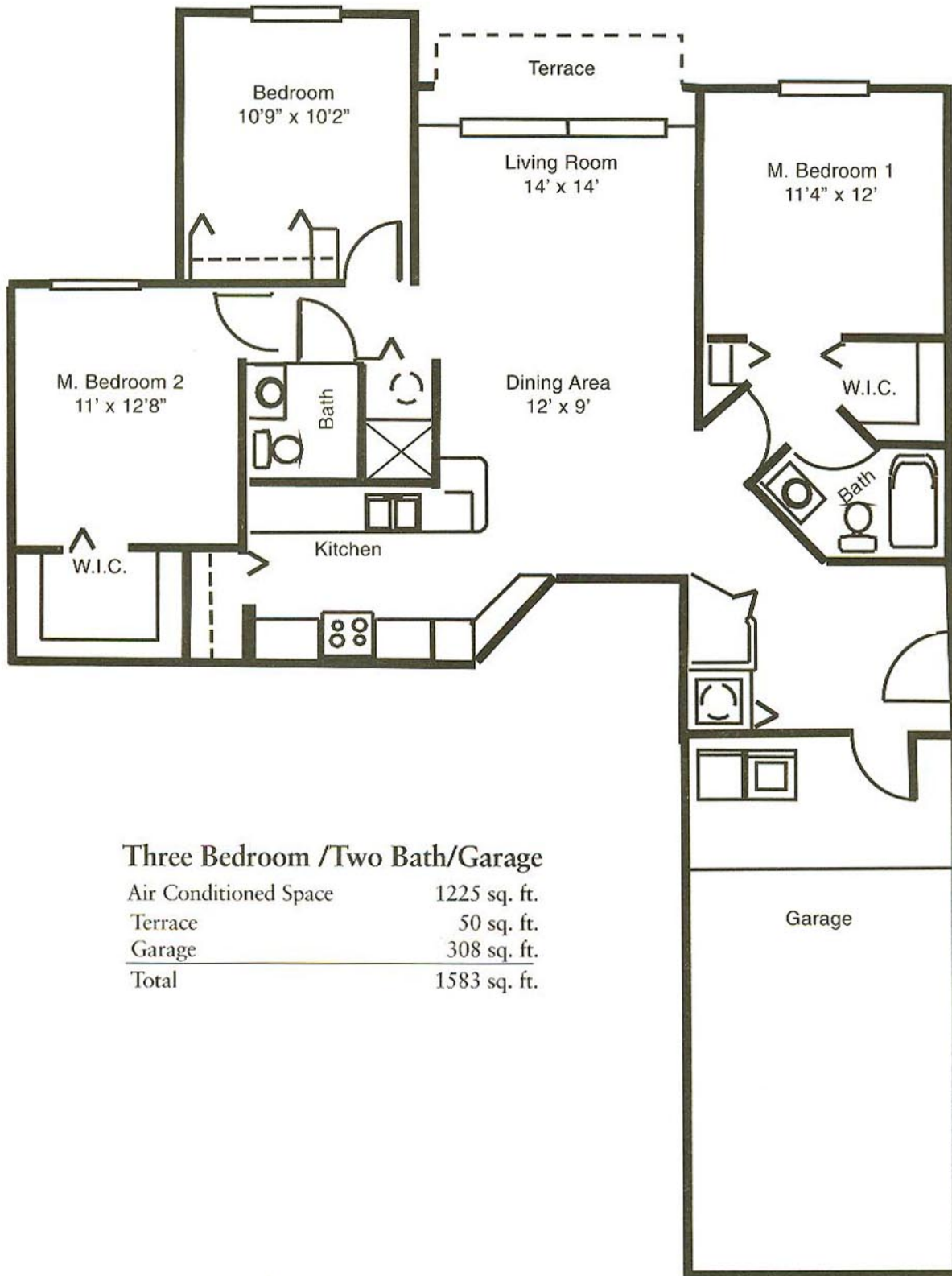
Elegant Bathrooms

- Ceramic tile
- Large vanity with storage drawer
- Tub/shower combination in both baths

Other Luxurious Features

- Full size washer and dryer
- Ceramic tile in foyer
- Private terrace
- Large walk-in closet
- Vertical blinds on all windows and sliding door
- Plush wall-to-wall carpeting
- Smoke detector and fire sprinkler system
- Pre-wired for cable TV and high speed internet access
- Intrusion alarm with monitoring option
- Ceiling paddle fan
- Track lighting in dining area
- Attached one car garage with automatic opener and large storage capacity
- Floorplan available on second floor only

Seaspray



Three Bedroom /Two Bath/Garage

Air Conditioned Space	1225 sq. ft.
Terrace	50 sq. ft.
Garage	308 sq. ft.
Total	1583 sq. ft.



4145 N. Haverhill Road, West Palm Beach, FL 33417 • (561) 687-7944 • Fax (561) 687-1135

Your selected floor plan may vary from this illustration. All dimensions are approximate.



Seaspray Features

Amenities

Spacious Kitchen

- European-style cabinetry
- Whirlpool appliances
 - Frost-free refrigerator with ice-maker
 - Dishwasher
 - Garbage disposal
 - Range with self-cleaning oven
- Built-in telephone shelf
- Ceramic tile
- Open breakfast bar

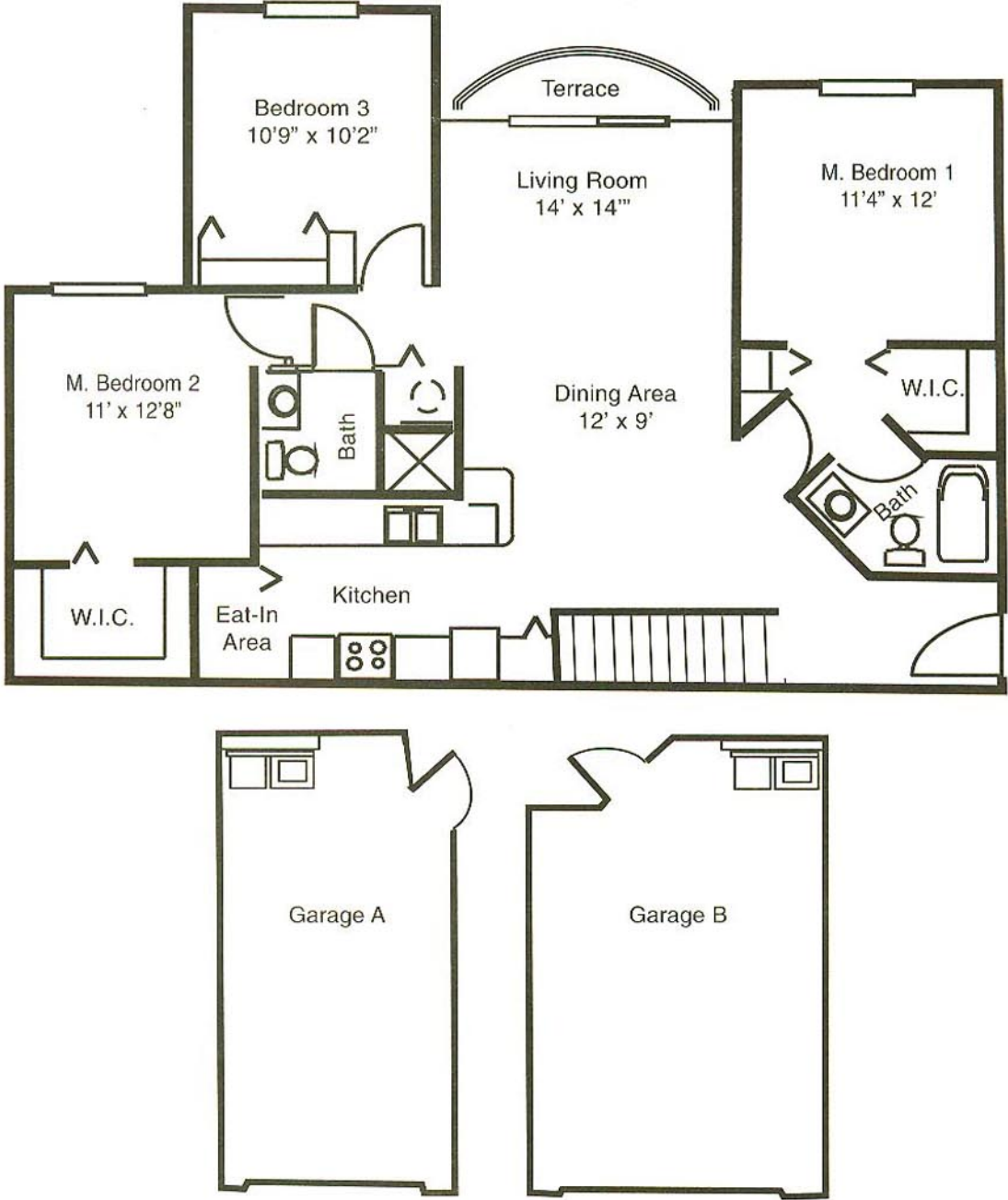
Elegant Bathrooms

- Ceramic tile
- Large vanity with storage drawer
- Master bath tub/shower combination
- Guest bath shower only

Other Luxurious Features

- Full size washer and dryer
- Ceramic tile in foyer
- Private terrace
- Large walk-in closets
- Vertical blinds on all windows and sliding door
- Plush wall-to-wall carpeting
- Smoke detector and fire sprinkler system
- Pre-wired for cable TV and high speed internet access
- Intrusion alarm with monitoring option
- Ceiling paddle fan
- Track lighting in dining area
- Attached one car garage with automatic opener and large storage capacity available on first floor only
- Floorplan available on first floor only

Southwind



Three Bedroom /Two Bath/Garage

Air Conditioned Space	1235 sq. ft.
Terrace	27 sq. ft.
<hr/>	<hr/>
Total	1262 sq. ft.
Garage A	299 sq. ft.
Garage B	329 sq. ft.

4145 N. Haverhill Road, West Palm Beach, FL 33417 • (561) 687-7944 • Fax (561) 687-1135



Your selected floor plan may vary from this illustration. All dimensions are approximate.



Southwind Features

Amenities

Spacious Kitchen

- European-style cabinetry
- Whirlpool appliances
 - Frost-free refrigerator with ice-maker
 - Dishwasher
 - Garbage disposal
 - Range with self-cleaning oven
- Built-in telephone shelf
- Ceramic tile
- Eat-in area with breakfast bar

Elegant Bathrooms

- Ceramic tile
- Large vanity with storage drawer
- Master bath tub/shower combination
- Guest bath shower only

Other Luxurious Features

- Full size washer and dryer
- Private terrace
- Large walk-in closets
- Ceramic tile in foyer
- Vertical blinds on all windows and sliding door
- Plush wall-to-wall carpeting
- Smoke detector and fire sprinkler system
- Pre-wired for cable TV and high speed internet access
- Intrusion alarm with monitoring option
- Ceiling paddle fan
- Track lighting in dining area
- Attached one car garage with automatic opener and large storage capacity
- Floorplan available on second floor only